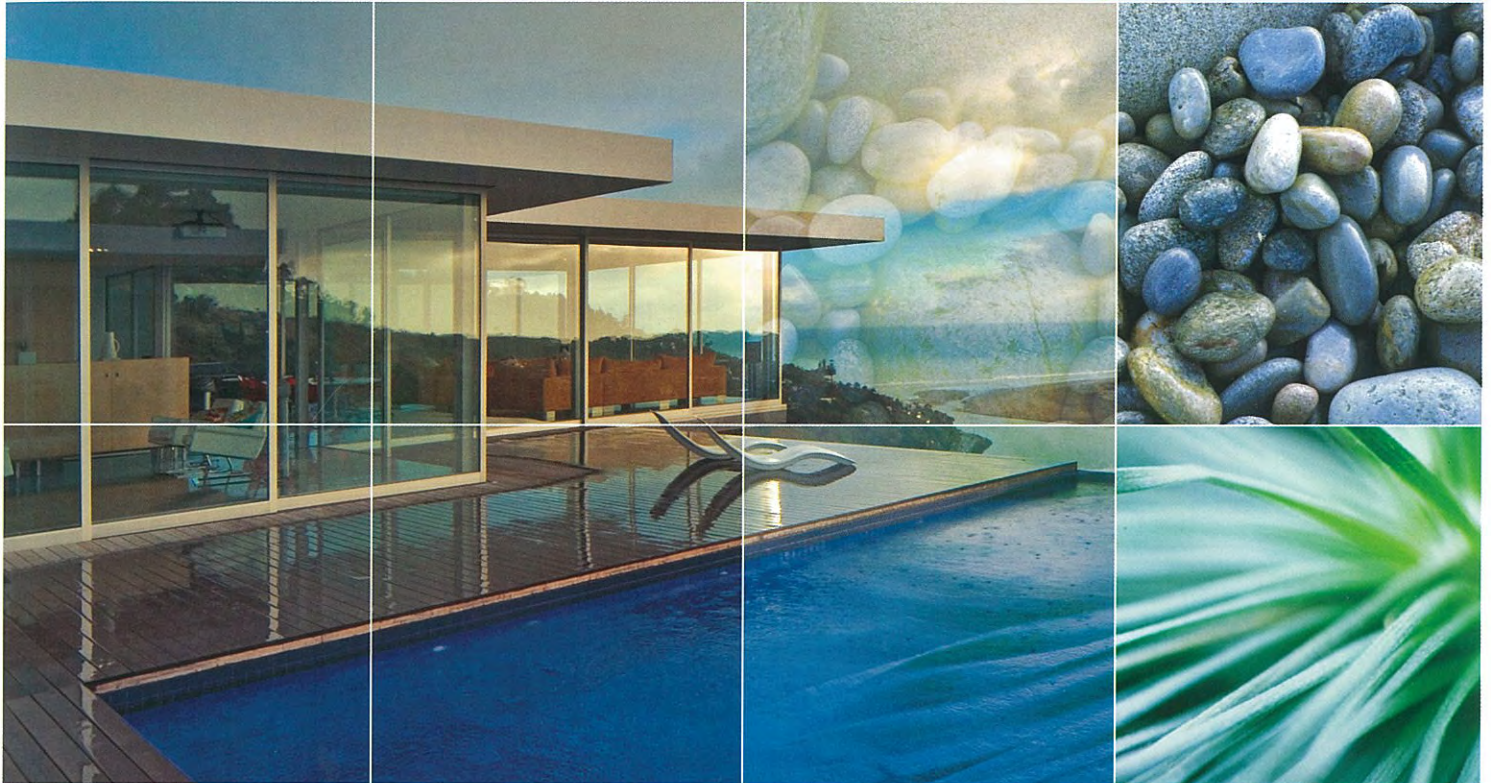


Interpon[®]
powder coatings
EVERY COLOR IS GREEN



Interpon D1000 - Color For Living

Residential Architectural Powder Coatings



AkzoNobel

Interpon D1000

COLOR FOR LIVING



Interpon VIVICA™ PEARLESCENT RANGE



Vivica™ Anthracite
Satin GY144A



Vivica™ Storm Front
Matt GL249A



Vivica™ Nobel Silver
Satin GY119A



Vivica™ Ultra Silver
Gloss GY070A



Vivica™ Citi®
Matt GL211A



Vivica™ Snow Dust
Matt GA228A



Vivica™ Black Onyx
Gloss GY042A



Vivica™ Charcoal Metallic
Gloss GM019A



Vivica™ Pewter Pearl
Satin GY199A



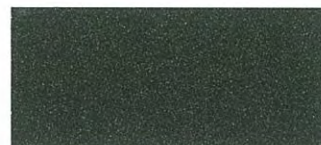
Vivica™ Palladium Silver
Satin GY184C



Interpon SABLÉ™ COLLECTION



Sablé™ Bass
Texture GN297A



Sablé™ Asteroid
Texture GN271A



Sablé™ Brilliance
Texture GL277A



Sablé™ Core Ten™
Texture GX350A

Interpon COLLECTION ANODIC



Anodic Champagne
Matt GY276A



Anodic Natural
Matt GY235A



Anodic Silver Grey
Matt GL237A



Anodic Clear
Matt GY221A



Anodic Natural Merlin
Matt GY243A



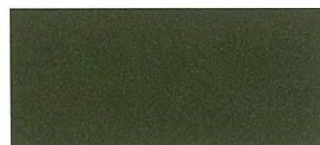
Anodic Off White
Matt GD227A



Anodic Dark Grey
Matt GL213A



Anodic Slate Grey
Matt GY218A



Anodic Bronze
Satin GY114A



Anodic Natural Silk
Matt GY242A

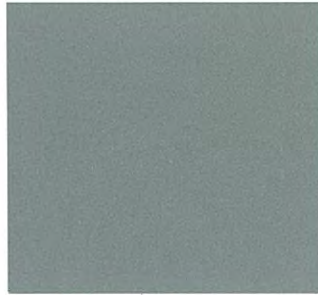
Interpon TREND COLLECTION



Vivica™ Charcoal Pearl
Matt GY237A



Anodic Nighthawk
Matt GY244A



Vivica™ Treasured Silver
Satin GW103K



Vivica™ Mercury Silver
Gloss GW003K



Vivica™ Beach Sand
Matt GY234A



Vivica™ Mystic
Matt GY236A

Interpon LIVING SERIES



Transformer Grey
Gloss GL031A



Pearl White
Gloss GA078A



Bright White
Gloss GA030A



White
Satin GA124A



Magnolia
Gloss GD025A



White Birch
Gloss GA057A



Stromboli
Satin GK148A



APO Grey
Satin GL107A



Oyster Grey
Matt GL258A



Off White
Matt GA211A



Rivergum
Gloss GD042A



Primrose
Gloss GD037A



Wizard
Gloss GJ054A



Notre Dame
Gloss GL040A



Olde Pewter
Satin GL175A



Shoji White
Satin GA160A



Barley
Gloss GD007A



Doeskin
Satin GD188A



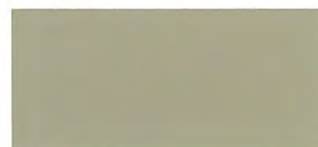
Excel™ Hawthorn Green
Gloss GK030A



Excel™ Charcoal
Satin GL180A



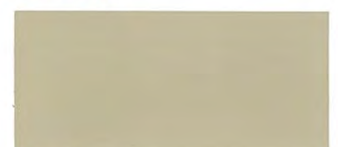
Roseberry Grey
Gloss GL015A



Pottery
Satin GM175A



Almond Ivory
Gloss GD016A



Stone Beige
Matt GD247A



Excel™ Heritage Green
Gloss GK044A



Custom Black
Matt GN248A



Black
Satin GN150A



Hamersley Brown
Satin GM100A



Claret
Satin GG142A

Interpon EXCEL™ COLORBOND® STEEL COORDINATES



Excel™ Pale Eucalypt®
Matt GK236A Satin GS136A



Excel™ Blue Ridge®
Matt GJ221A Satin GQ121A



Excel™ Windspray®
Matt GL266A Satin GP166A



Excel™ Shale Grey®
Matt GL284A Satin GP184A



Excel™ Surfmist®
Matt GA236A Satin GB136A



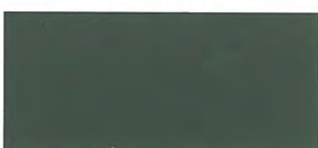
Excel™ Classic Cream®
Matt GD245A Satin GU145A



Excel™ Wilderness®
Matt GK289A Satin GS189A



Excel™ Ironstone®
Matt GL236A Satin GP136A



Excel™ Woodland Grey®
Matt GL205A Satin GP105A



Excel™ Dune®
Matt GL252A Satin GP152A



Excel™ Evening Haze®
Matt GM235A Satin GT135A



Excel™ Paperbark®
Matt GD214A Satin GU114A



Excel™ Cottage Green®
Matt GK274A Satin GS174A



Excel™ Deep Ocean®
Matt GJ203A Satin GQ103A



Excel™ Monument®
Matt GL229A Satin GP129A



Excel™ Jasper®
Matt GM214A Satin GT114A



Excel™ Bushland®
Matt GK203A Satin GS103A



Excel™ Headland®
Matt GG219A Satin GV119A

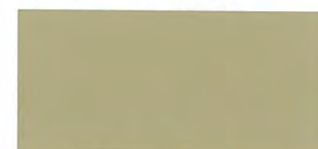
Colors displayed on this color card are a guide only and have been matched as closely as possible to Interpon production standards under daylight conditions. Due to the nature of the printing process, some degree of color and gloss level variation may occur. Where more than one finish is available, product color may vary. We recommend that you use production line prepared samples for final color selection or approval.



Excel™ Night Sky®
Matt GN231A Satin GN121A



Excel™ Loft®
Matt GM236A Satin GT136A



Excel™ Sandbank®
Matt GM216A Satin GT116A



Excel™ Manor Red®
Matt GG262A Satin GV162A



Interpon®
powder coatings
EVERY COLOR IS GREEN

Interpon CUSTOMER CARE TEAM

East Coast and South Australia Tel: 1800 630 516 Fax: 1800 650 786

Western Australia Tel: 08 9494 7727 Fax: 08 9494 7771

Email: salesoz@interpon.com

www.interpon.com.au



Interpon D1000

LASTING POWDER COATINGS FOR RESIDENTIAL
AND LIGHT COMMERCIAL PROJECTS

THE FUTURE OF COLOR

People are driven by emotion – and color elicits different emotions in people. As the world's largest coating company, no other company has more experience in color trends than AkzoNobel. Home to the Aesthetics Centre, our in-house color and design experts anticipate and predict movements in trends that affect color and coating choices for architectural applications. We have drawn on the knowledge of our global Aesthetics Centre, along with our own Australian insights, to produce this Residential Architectural Powder Coatings Collection, **COLOR FOR LIVING**.

TREND COLLECTION – DRIVEN BY DESIGN

The **Trend Collection** heralds the color themes of emerging architecture and allows harmony to be created within an environment designed for everyday living in Australia.

SABLÉ™ COLLECTION – TACTILE IN DESIGN

The exclusive **Sablé™ Texture Collection** features a subtle deflection of light emerging from within a tactile surface. This allows for seamless fusion and intimacy with both natural building materials and rendered finishes.

VIVICA™ – PEARLESCENT RANGE

The **Vivica™ Pearlescent Range** adorns acclaimed modern design with a soft metallic finish, providing luxury and richness with its timeless pearlescent lustre.

COLLECTION ANODIC

Collection Anodic exhibits a sharp metallic finish to highlight a striking modern look. It's also an environmentally friendly alternative to anodising, with all the benefits of powder coating.

COLOR FREEDOM

AkzoNobel values the importance of color and finish in your design and understands that color expression is an extension of your project. Why not take advantage of our made-to-order color service. For smaller projects down to 20kg, **Interpon MiniB™** and **Interpon MiniB™ Micro** provides fast service on small batch made-to-order colors that are specific to your needs. Some conditions do apply such as choice of color and product. Please contact the **Interpon** Customer Care Team for additional advice.

GREEN STAR RATING

While **Interpon D1000** Powder Coatings are available in all colors, EVERY COLOR IS GREEN, which also safeguards our precious environment. Please contact the **Interpon** Customer Care Team for Green Star Rating advice.

10 YEAR WARRANTY

Interpon D1000 is supported by a 10 Year Residential Warranty, providing a perfect solution for residential and light commercial applications provided :.

- ▲ The construction is no more than three (3) levels above ground.
- ▲ The construction is more than 100 metres from any salt water or the surf line.
- ▲ The 10 Year Bronze Residential Global Warranty covers both Film and Color *.

* Conditions apply to the **Interpon D1000** Bronze Global Warranty. A copy of the warranty is available upon request.

Interpon D APPROVED APPLICATORS

AkzoNobel has developed the **Interpon D** Approved Applicators Network to support the **Interpon D** Global Warranty Program. This program is designed to ensure the **Interpon** powder coating you choose is applied correctly, meeting **Interpon** Powder Coatings warranty requirements to local and international standards.

HOW TO SPECIFY Interpon POWDER COATINGS

Once you have chosen **Interpon** Powder Coatings for your project, it's important to use the correct product. So we make specifying **Interpon** powder coatings easy. Simply:

- a. Nominate the **Interpon** product. e.g. **Interpon D1000**.
- b. Nominate the color, finish and product code. e.g. Anodic Natural Matt GY235A.

Please contact the **Interpon** Customer Care Team for additional specification support and advice.

COMMERCIAL PRODUCT RANGE TO SUIT EVERY PROJECT

To compliment the **Interpon D1000** residential range, AkzoNobel offers **Interpon D2010**, **Interpon D2015** **Ultriva™** and **Interpon D3000 Fluoromax®** commercial range of powder coatings for exclusive residential, commercial and prestigious commercial projects with extended warranties "on building" for up to 20 years. Please contact the **Interpon** Customer Care Team for warranty and specification support and advice.

Interpon – YOUR PARTNER IN SUCCESS

Interpon Powder Coatings has a range of materials and resources to help you succeed with your project – from the selection of product, coordination of color, meeting of project specifications, choosing an approved applicator right through to ongoing care and maintenance advice. The Customer Care Team at **Interpon** Powder Coatings is ready and willing to assist you with your next project.

Sales and Support Contacts

AUSTRALIA

e: salesoz@interpon.com.au

www.interpon.com.au

EAST COAST AND SOUTH AUSTRALIA

Tel: 1800 630 516

Fax: 1800 650 786

WESTERN AUSTRALIA

Tel: 08 9494 7727

Fax: 08 9494 7771



Disclaimer

Unless otherwise agreed by us in writing, any contract to purchase products referred to in this color card and any advice that we give in connection with the supply of products are subject to our standard conditions of sale. Typical end uses for Interpon products are displayed in this publication using actual projects and representative images.

Interpon® and Fluoromax® are registered trademarks of AkzoNobel International BV. Ultriva™, Excel™, Vivica™ and MiniBT™ are trademarks of AkzoNobel Pty Limited.

COLORBOND® and ® color names are registered trademarks of BlueScope Steel Limited. ™* color names are trademarks of BlueScope Steel Limited. # Over time performance may vary between COLORBOND® steel and Interpon Powder Coatings due to the different paint technologies used.

AkzoNobel would like to acknowledge and thank Trend Windows, NALCO, AWS and Urbayne Homes for images used in this color card.

© Copyright 2009 AkzoNobel Pty Limited ABN 59 000 119 424 March 2009. Design: jwam.com.au

IAS-ANZ



green building council australia
MEMBER

Proudly Supplied by:

Interpon®
powder coatings

EVERY COLOR IS GREEN

www.interpon.com.au